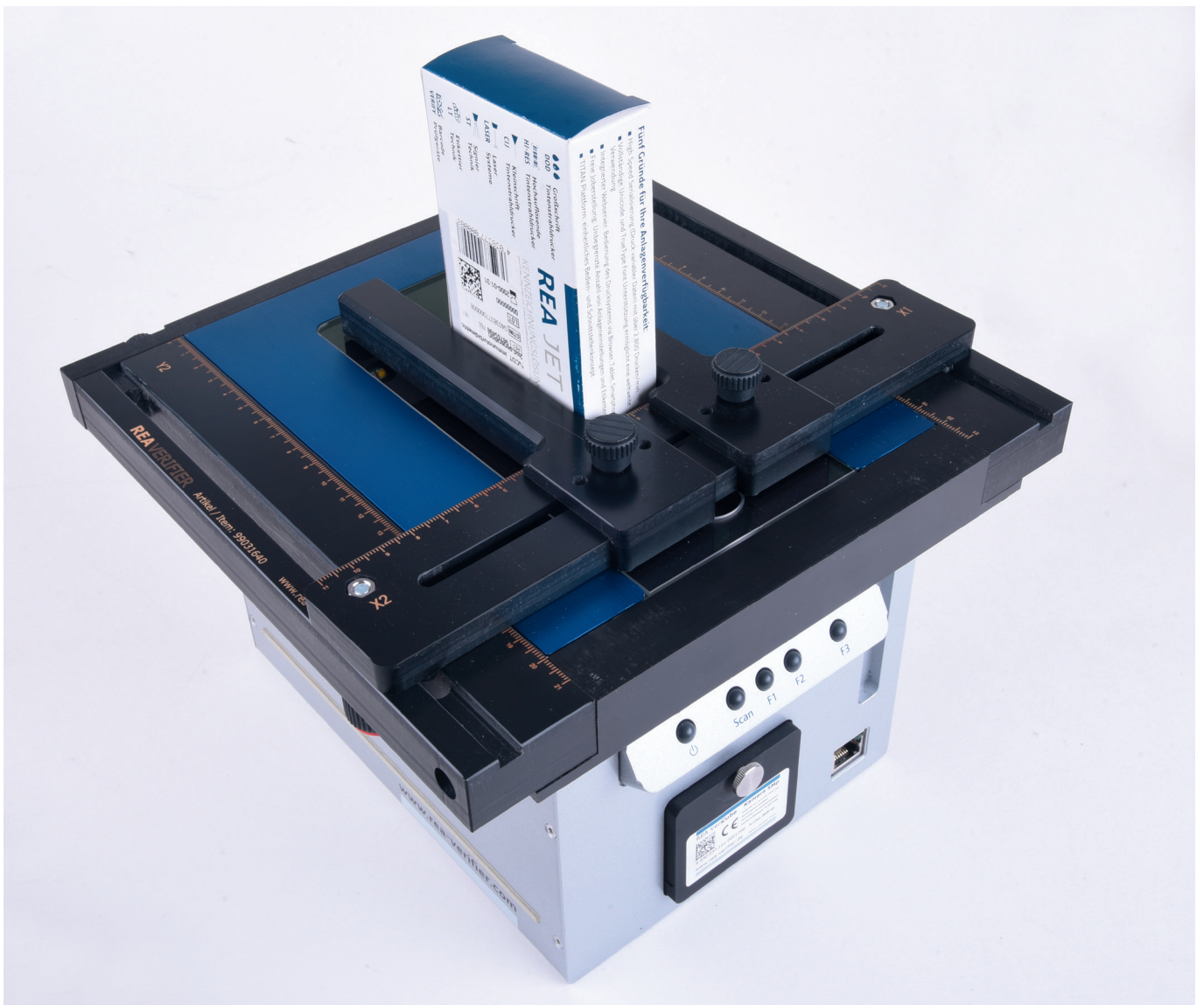


REA VERIFIER

QUALITY CONTROL DEVICES
FOR MATRIX- AND BARCODES

REA VeriCube Positioning Aid

Precise positioning



Adjustable positioning device for different samples

The positioning device is a frame for the REA VeriCube barcode verification device. The movable stops can be adjusted in x- and y-axis for each sample. A code to be verified is by using the positioning aid once at the correct position. This way a code for the test is automatically positioned in the center of the measuring field of view.

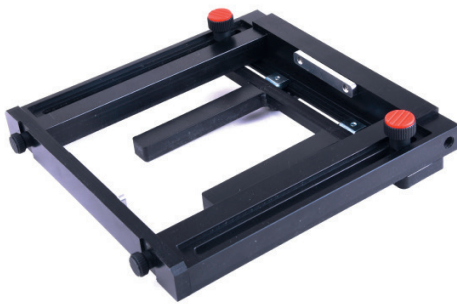
Time consuming manual positioning by the aid of the live image view is no longer necessary. This increases the measurement efficiency. Especially when changing production batches this is a big advantage.

The universal positioning device is ideal for measuring the print quality on folding cartons or similar packaging materials during production.

This device can be used, for example, in the pharmaceutical, food, cosmetics and tobacco industries, by manufacturers of packaging materials and in many other sectors.

The positioning device can be mounted to the REA VeriCube in just a few steps. The recessed grips of the REA VeriCube guarantee a secure mounting and position.

The positioning aid is printed with a scale. This makes it easy to document and adjust positions for different packaging materials.



View from below:
Fast mounting of positioning aid



View from above:
REA VeriCube Positioning Aid



Precision positioning of the sample

