

REA JET

INDUSTRIAL CODING AND
MARKING SOLUTIONS -
MADE IN GERMANY

Coding and Marking Solutions for the Building Materials Industry

Direct Marking of Building Materials during Production



Direct Marking of Building Materials during Production

For rough production conditions such as humidity, heat, cold, dust, fibers or contaminated surfaces, we have developed professional solutions for direct coding and marking of products.

Batch tracking and product information through contact-free printing of your individual codes, data, colors, company logos and many other applications for your safety and efficiency.



Large Logos Markings on Building Materials



REA JET DOD 2.0 Large Character Inkjet Printer

Use the DOD System to print texts, data or logos in a print height of up to 140 mm for each print head. For larger prints several print heads can be combined.

[Product Information](#)

[Product Video](#)



Direct Marking of Plaster Boards



REA JET GK 2.0 High Resolution Inkjet Printer - Piezo

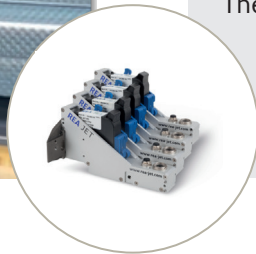
Direct marking of product and goods is particularly resource and environmentally friendly, e.g. with the piezo-based inkjet printer line from REA.

[Product Information](#)

[Product Video](#)



Replacement of Labels on Metal Profiles



REA JET HR High Resolution Inkjet Printer - TIJ

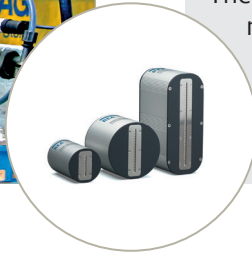
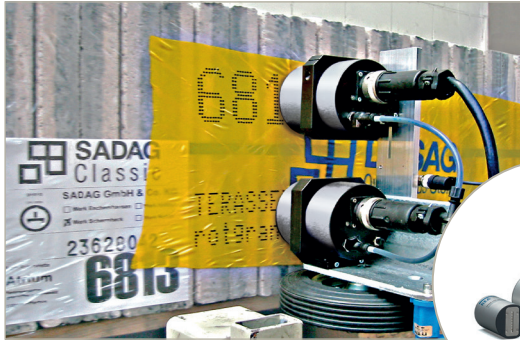
The direct printing of codes into a colour ink field can replace labels and ensure for varietal purity. The permanent and secure marking ensures clear identification of materials.

[Product Information](#)

[Product Video](#)



Coding and Marking on different Building Materials



REA JET DOD 2.0 Large Character Inkjet Printer

The system with the 7-, 16- or 32-nozzle print heads marks absorbent and non-absorbent materials. It is controlled via the REA JET TITAN platform: the uniform operating concept for all REA JET coding and marking technologies with decisive customer advantages.

[Product Information](#)

[Product Video](#)



UFI Code Product Marking



REA JET SC 2.0 Small Character Inkjet Printer

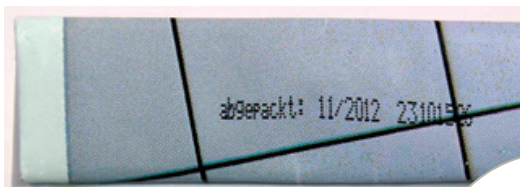
In addition to the 16-digit alphanumeric UFI code, a 2D Data Matrix code can be inserted. This code includes the UFI code and the referenced production data which can both be checked by camera.

[Product Information](#)

[Product Video](#)



Paper Bag Marking - CIJ Substitution



Before CIJ: Continuous Inkjet



After HR: REA JET HR



REA JET HR High Resolution Inkjet Printer - TIJ

Use the clean, maintenance-free HP cartridge technology for sharp markings. Replace your CIJ system and benefit from low ink consumption and an absolutely maintenance-free system without any solvent pollution in your working environment.

[Product Information](#)

[Product Video](#)

REA JET



REA Elektronik GmbH

Teichwiesenstrasse 1

64367 Muehltal

Germany

T: +49 (0)6154 638-0

F: +49 (0)6154 638-195

E: info@rea-jet.de

www.rea-jet.com