

# REA JET

INDUSTRIAL CODING AND  
MARKING SOLUTIONS -  
MADE IN GERMANY

## Late Stage Customization

Digital Inline Printing of Variable Data



# Solutions for the Labeling and Packaging Printing Industry as well as Machine and Plant Engineering

The personalization of printed products and the increasing diversity of variants with small batch sizes require flexible solutions.

REA JET enables you to meet the market demands and inspire your customers with customized products. Make your machines fit for the future and embrace the advanced REA technology.

## Challenges in the printing industry:

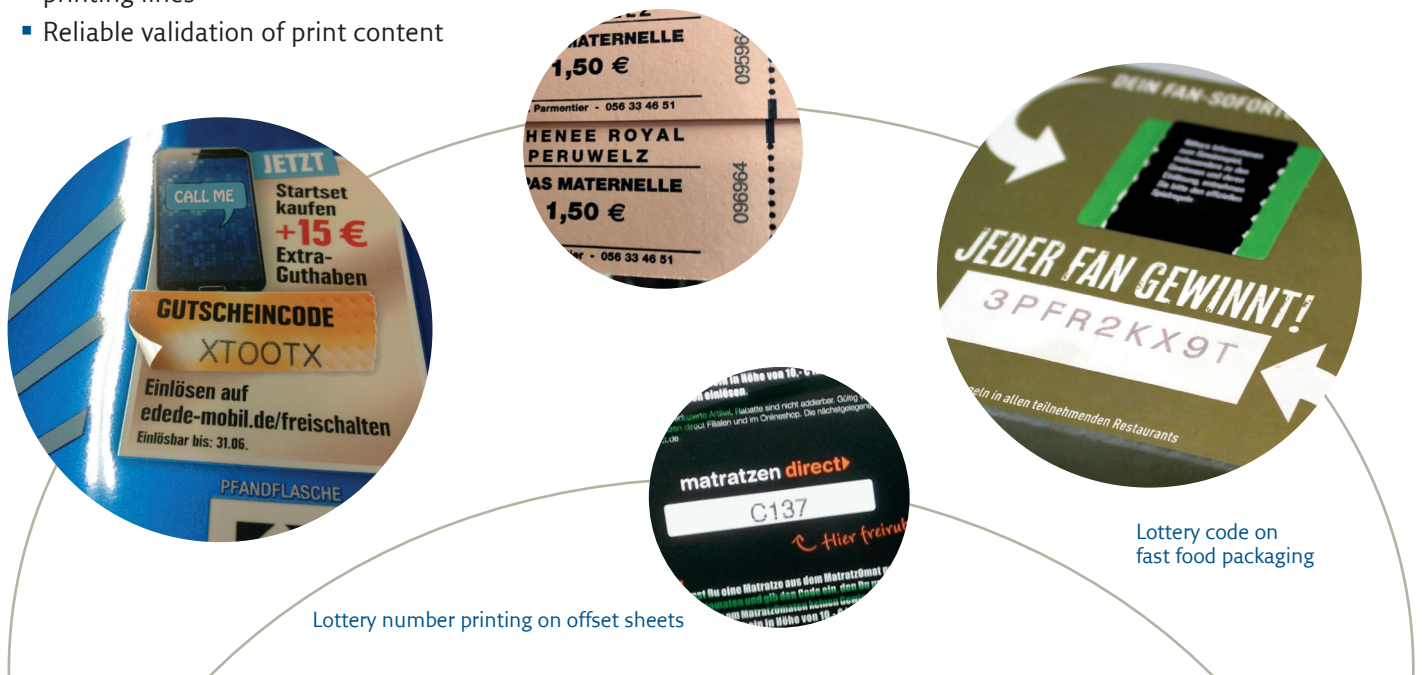
- Customer request for individual finishing & customization
- Production of small batches
- Demand for short order lead times
- High costs for offline printing processes
- Integration of a marking system into existing printing lines
- Reliable validation of print content

## Solution:

REA systems significantly reduce the complexity and costs of your packaging processes while increasing the efficiency and effectiveness of your procedure.

## Areas of application:

- Serialization and Track & Trace applications
- Marketing - discount and promotional campaigns
- Personalized prints
- For packaging with frequently changing information, such as country version and content details
- Fast implementation of new labeling regulations



Applications of examples	Integration	Type of device	Product
Promotion codes on the back of paper labels	Continuous material in the bow cutter	8 x HR pro 2K with two print heads each	16 product tracks of paper, each with one print head
Lottery numbers on give-aways	Folding and gluing system with friction feeder for separating	1 x HR pro with one print head	Cardboard blank (cap shape)
Registration numbers on the inside of food packagings	Folding and gluing system with friction feeder for separating	1 x HR with one print head	Packaging blank from cardboard

# Integration into packaging lines - Individualization at the last minute

Enhance label finishers, printing, or roll cutting machines significantly with our ‚digital option‘.

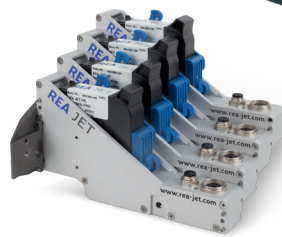
Integrated with new installations from the factory or retrofitted into already installed machines.

**For machine and plant engineering this opens up a wide range of possibilities:**

- Short set-up times
- Compact design
- High print quality
- Flexible number of users



REAJET HR pro OEM



REAJET HR print heads

**High-Speed Print up to 762 m/min**

**Text, Graphics, 1D and 2D codes**

**Completely Maintenance free**

**Easy Retrofit**

## Error free operation:

The REAJET TITAN platform is a cross-device and cross-technology operating concept for all REAJET marking technologies with ink, paint or laser.

Employees only need to be trained once and can thus operate all REAJET marking systems used in the company.

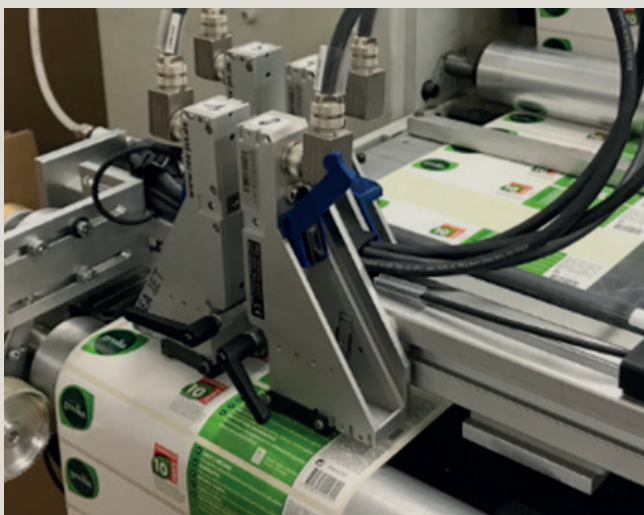
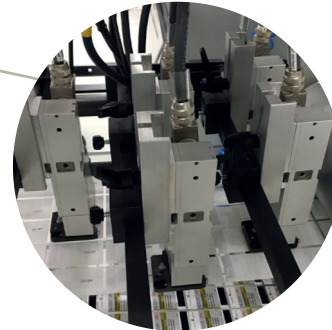
- Full Unicode support: all world languages printable
- Encrypted remote maintenance in case of service without additional costs or software installation
- Browser operation via mobile devices WLAN/WebGUI
- Reduces the risk of operating errors

	Product length	Print content	Product speed
	45 mm on 16 tracks parallel	14-character alphanumeric code with changing content from print to print	135 m/min
	24 cm	7-character alphanumeric code with changing content from print to print	300 m/min
	29 cm	12-character alphanumeric code with changing content from print to print	290 m/min



## Features and Benefits at a Glance

- Optimization of stock levels and yet wide range of product versions without additional storage costs
- Fast response to changing market trends and customer requirements - Securing competitive advantage
- Reduction of overproduction - Increase of sustainability
- Expand product portfolio with customized coding and marking services
- Lower investment compared to conventional CIJ systems
- Modular solution package - adaptable at any time
- Low production costs and high machine availability due to maintenance-free printing system - exchange of printing unit with every cartridge change
- Easy integration of single or multi-web applications with up to 32 print heads
- XML interface for cost-effective integration into machine controllers and HMIs
- Higher throughput thanks to high-speed applications of up to 200 m/min\*.
- Increase output by marking data up to 762 m per minute\*
- High-resolution (REA JET HR) inkjet system with up to 600 dpi and flexible print heights up to 50.8 mm (per controller)
- User-friendly and intuitive operation via REA JET TITAN platform
- Fast change of print layout
- Comprehensive ink portfolio for marking absorbent and non-absorbent surfaces
- Code quality check in one process with test equipment from REA VERIFIER
- 360° process monitoring with optional camera code verification
- *\*depending on the selected horizontal resolution, print content and system configuration*



# Flexible Software Packages for Efficient Print Content Management

Our modular software modules enable you to precisely manage the content and codes to be printed. With our flexible solutions, you can react quick and effectively to changes and optimize your production.

Whatever your requirements, our software offers you the right package. Choose the solution tailored to your needs and discover the wide range of possibilities offered by Late Stage Customization.

## Basic

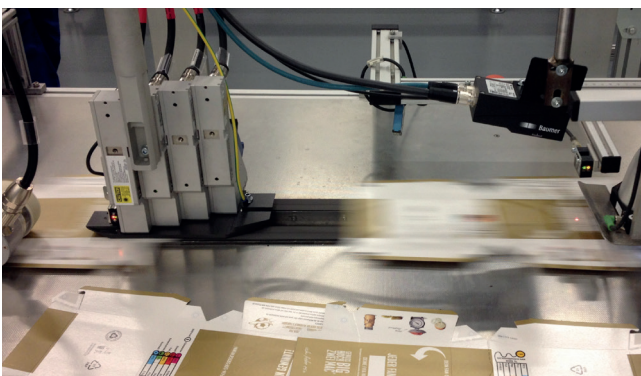
- Counter function via REA JET TITAN platform on controller
- Identical counter for each print head
- Control of 1 up to 4 print heads

## Advanced

- Database printing option
- Entry option for variable data printing
- Data import via .csv file (without data plausibility check (e.g. duplicates)
- Individual data assignment per print head
- Control of 1- up to 4 write heads per controller

## Professional Customization Suite Software

- Separate software controller for professional variable data printing
- Numbering module for individual counter printing for max. 8 print heads
- Promotion module for marking of database supported promotion codes
- Control of up to 32 HR print heads
- High speed applications with up to 45 prints per second
- Optional camera module for print presence and content control



# REA JET



## **REA Elektronik GmbH**

Teichwiesenstrasse 1

64367 Muehltal

Germany

Phone: +49 (0)6154 638-0

F: +49 (0) 6154 638-195

Email: [info@rea-jet.de](mailto:info@rea-jet.de)

[www.rea-jet.com](http://www.rea-jet.com)